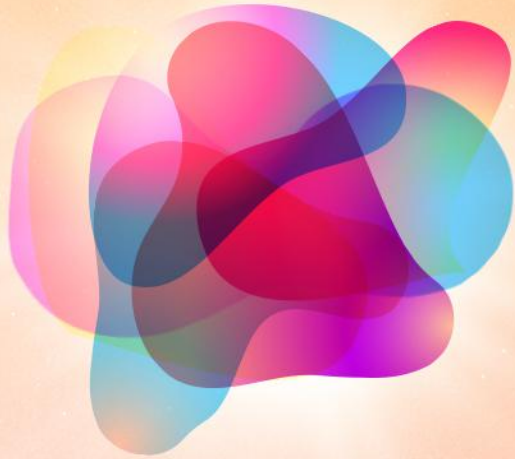


Natural Beautiful Healthful



HAIR COLOR

BY BWL BIO-TECH

Professional hair color & hair care for salon

MagiCode

20 Years Experience in R&D for hair color

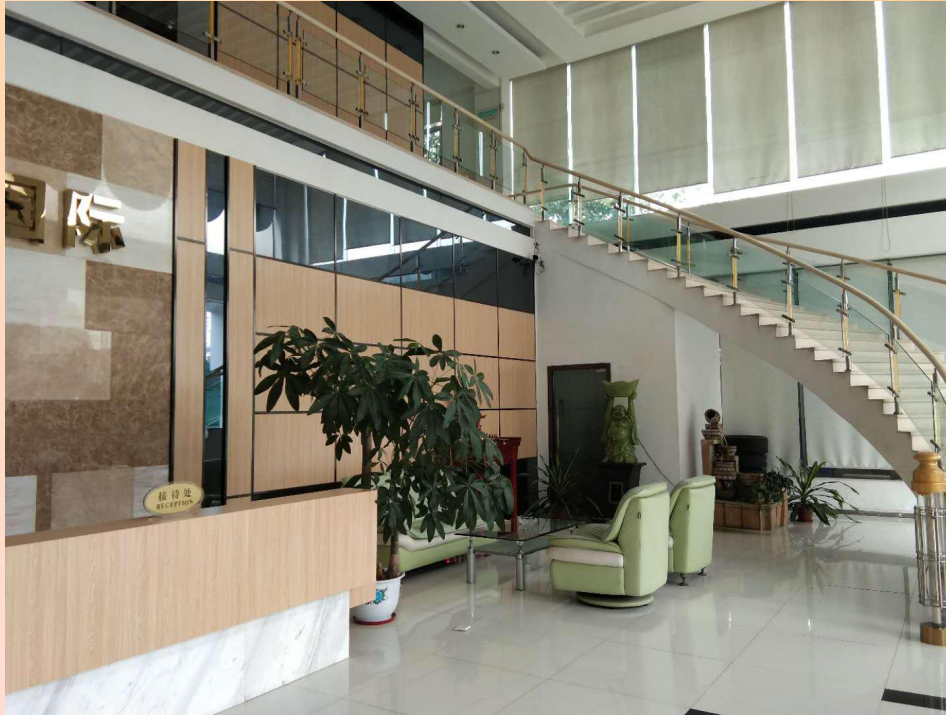
Company Introduction

- Adhering to the concept of "Natural, Healthful, Beautiful" , Beauty Whole Life Bio-Tech Co., Limited start the path of China's national brand—MagiCode."Health comes from natural ingredients. Beautiful is because of constant innovation. Excellence is due to constantly beyond". It's a firm belief for every BWL person.
- Beauty Whole Life Bio-Tech Co., Limited. Is a collection of R&D, production, sales for the integration of cosmetics enterprises, the factory is located in baiyun district , Guangzhou, China. Covers an area of more than 20000 square meters. In order to satisfied the demand of marketing, we have set up a marketing center in Renhe town which is nearby Guangzhou Baiyun International Airport and a new factory in Qingyuan which Covers 35000Sqms. Since the establishment of the company, under the leaders' astute plan and employee's joint efforts, we have developed various high-quality products for different use to meet different market needs.
- Currently has production of hair care, such as shampoo, conditioner, hair oil and the main products are hair color for professional salon, etc. A total of more than 20 professional production lines. In strict accordance with ISO22716 and GMPC international environmental management system. BWL has a profound understanding of the nature to hair beauty industry, and a strong ability of market planning and product research and development ability. Innovative thinking, accurately grasp the market dynamics, Efforts to build the top brand hair color products!



Our Factory

Factory Hall



Show Room



- ★ The factory covers an area of 20,000 Sqms
- ★ 20 QC personnel, 6 R&D personnel
- ★ 20 Advanced production lines



MANUFACTURING FACILITY

- ◇ During the past few years, BWL has also invested heavily on the innovation of machines and equipment. In 2015, BWL set up a new state-of-the-art production equipment in order to keep up with the region's increasing wash protect and skin care products demands.
- ◇ The comprehensive facility, equipped with the latest European technology for key processes such as blending, filling and packaging, has a ability to produce approximately 50,000 pcs per day to meets the demands of the company's network of retail and distribution outlets across the world.



Our Production Facility



GMPC & ISO STANDARD
Production Ability : 50000 Pcs / Day



BWL RESEARCH

- Strong R&D Capabilities

- In 2015, BWL set up a new state-of-the-art production equipment in order to keep up with the region's increasing hair color and hair care products demands. BWL, a raw material and technology solution for hair beauty industry, gives a mature leading edge to technologies and updated industry information. The close co-operation with research institutes in the mainland and abroad also grants great support on the development of new high-tech products.

- Strict Quality Control

- Strict Quality Control System ensures the consistent quality products at all times . There are more than 20 staffs in our QC Department which adopts an all-around & strict control from raw material, packaging material, semi-finished products to finished products , so as to ensure the quality, safety and stability of all products. Furthermore, the adoption of ISO 22716 and GMPC authentication is another assurance for the products quality.



Our Laboratory



PRODUCT PROFILE

- ★ Consumers have become more sophisticated and care more about the quality and effectiveness of hair care products. Therefore, there are many products available in the market, offering different benefits like smoothing, hair loss control and moisturizing, damaged skin repair, etc.
- ★ Beauty Whole Life Bio-Tech Co., Limited, mainly supply high quality hair care products and hair color hair dye products with reasonable price and best service.
- ★ For different hair and structures, intensive, systematic care is very important. The balanced and coordinated effective materials it's basic elements. Hair injury does not occur in one day. Only by using the proper product, will be obtain the effective result.



MAIN PRODUCTS



Green Series- With Sandalwood Oil

Description: High formula with sandalwood oil



AWKEN- Pearl Wax Dye

Description: Unique P5 factor, accurate dyeing, long lasting, no peculiar smell, no damage to hair.

C series mixed 1:1 with 9% developer . Balance grey coverage.

S series mixed with 12% developer 1:1, with multi-directional keratin protection to create a rich and fashionable color effect, and more anti-drying formula to make hair evenly colored and shining.



CHOCIA- CACCE-BENSER



Love Series- Ammonia Free

Description: Ammonia free, 100% grey coverage, long lasting



G 系列盖白发

AMMONIA-FREE FORMULA · HENS STRONG COLOR COVER GRAY HAIR
无氨配方 · 色彩浓厚 · 衡盖白发

G-4/55 黑红 DEEP RED	G-5/66 深红 DEEP RED-BLUE	G-5/75 深红 DEEP RED-BROWN	G-6/31 黑 BLACK BROWN
G-6/41 黑 COFFEE AND GOLD	G-6/43 黑 GOLDEN CORAL	G-6/45 黑 WINE RED	G-6/77 黑 LAVENDER

操作说明 1. 染发前1-2周，可以100%覆盖白发，加热20-25分钟，停留5分钟用剩余染膏刷一遍，自然停留5-10分钟。
建议：盖白发时间不少于40分钟可使效果更佳。

2/0 黑 BLACK	4/0 黑 MEDIUM BROWN	5/0 黑 LIGHT BROWN	6/0 黑 DARK BROWN
-------------------	--------------------------	-------------------------	------------------------

D 系列多段色

AMMONIA-FREE FORMULA, COLOR SATURATION, SHINY SUPPLE
无氨配方 · 色泽饱和 · 光泽柔顺

D-6/66 黑 PURPLE DIMENSION	D-7/75 黑 Chestnut Brown	D-7/77 黑 SILVER	D-77/55 黑 LIGHT RED MANGANY
D-77/44 黑 LIGHT BROWN	D-77/43 黑 PINKISH RED	D-77/33 黑 GOLDEN YELLOW	D-77/73 黑 MARVEL VET BLONDE
D-8/45 黑 BLONDE COFFEE LASCENT	D-8/43 黑 MEDIUM COPPER BROWN	D-8/41 黑 RED SHINE	D-8/33 黑 LIGHT GOLDEN

操作说明 1. 染发前1-2周，染发在5级6级以上的可以一步染发，加热20-25分钟，停留5分钟用剩余染膏刷一遍，自然停留5至10分钟。
建议：发根在7级以上先打底染染，着色效果更佳。

C 调彩

COLOR VOGUE

0/33 黄 YELLOW	0/45 红 RED	0/66 紫 VIOLET	0/88 蓝 BLUE
6/11 黑 MISTY DARK BALANCE	7/11 黑 COFFEE BROWN	8/11 黑 SILVER LIGHT BROWN	X8 极浅棕白
6/77 黑 COFFEE	7/77 黑 LIGHT COFFEE BROWN	7/33 黑 RED	X9 极浅棕白
8/2 黄 YELLOW	8/22 黑 PLATINUM COFFEE	0/00 黑 CLEARFONE	

冷色系 COOL COLOR 性感 吸睛 染出了高格调
SEXY COMPPELLING EYES & HIGH STYLE VERY DISTINCTIVE

Artisan-Chocolate Silky

Description: Chocolate silky,64 fashion colors,



MDISA



Description: Low Ammonia-Competitive Price



MDISA-New Version

Description: Low Ammonia-Competitive Price



Empress-Low Ammonia-High Formula



ARIEC



PEACOCK-High Quality With Sandalwood Oil



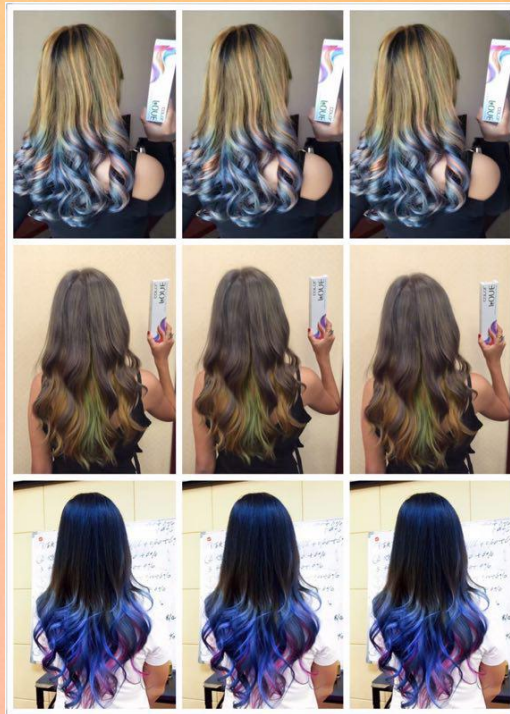
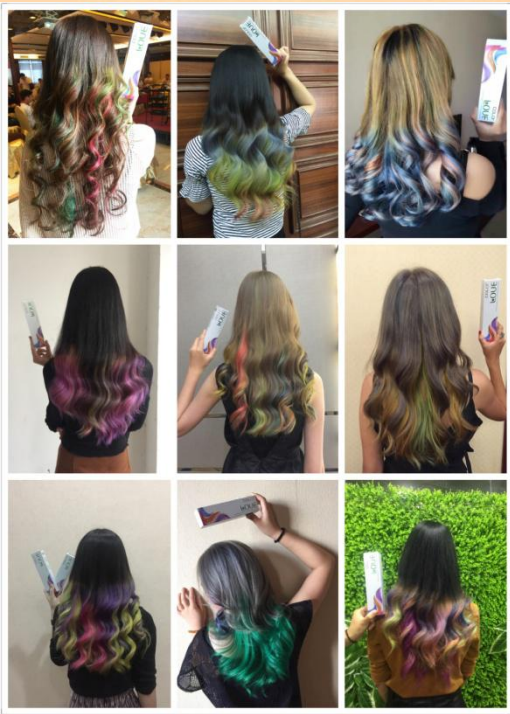
High formula with sandalwood oil



U'OMAGL



Product Effect – LOVE SERIES



Product Effect – ARTISAN music color

色匠ARTISAN
妙丝MUSIC COLOR

日系时尚元素系列

日系时尚元素 9/16

日系时尚元素 9/32+CM/00搭配染

日系时尚元素 9/05+百变草木染

日系时尚元素 9/10



色匠ARTISAN
妙丝MUSIC COLOR

日系时尚元素系列

日系时尚元素 9/56

日系时尚元素 9/18

日系时尚元素 9/07

日系时尚元素 9/10+CM/00



SERVICE

- ★ Encouraging creativity, innovation & continual improvement.
- ★ Adopting practices that are ethical and socially as well as environmentally responsible.
- ★ Strict Quality Control System ensures the consistent quality products at all times.
- ★ Experienced Merchandising and Customer Service.
- ★ Integrated logistics service.



CONTACT US

Add: No.351 Helong 7th RD, Renhe Town, Baiyun District, Guangzhou, China .

Factory Address: No.6, Datang Industrial Zone, xialiang RD, Longgui Town, Baiyun District, Guangzhou, China.

Email: info@bwlhk.com shirley@bwlhk.com

Mob/Whatsapp: +8613302263624

Skype: shirleyxiao0616



Tips: Scan above QR code to add our wechat and get more details.

